

The unfailing eye – *testero vision.*

Vision inspection of surfaces and outlines.

ixmation

High precision constant inspection. With *testero vision*. By ixmation.

- └ Economical quality inspection
- └ Self-learning inspection system
- └ Repeatable inspection results

Industry independent quality inspection

ixmation *testero vision* is an automatic vision quality control station, which inspects part surfaces within micron accuracy using a camera and the associated digital image process software. It inspects rotationally symmetrical precision parts such as medical screws, quality parts for automobiles, fine gears for watches, etc.

Whenever a surface must be 100% perfectly prepared, in order to ensure that the following processes and treatments succeed and achieve the highest quality, the ixmation *testero vision* is the automatic learning optical inspection system is the system of your choice – available as a stand-alone system or as a integrated part of a complete production system.

Scope of Inspection System

Customization to different processes and machine is possible. The system consists of:

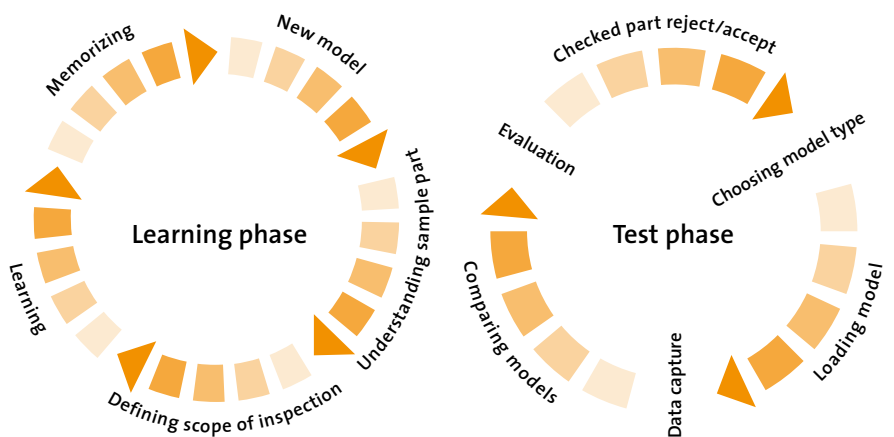
- └ Machine Base
- └ Material handling
- └ Camera
- └ Lighting and Optics
- └ Digital image processing
- └ Documentation materials

Optional:

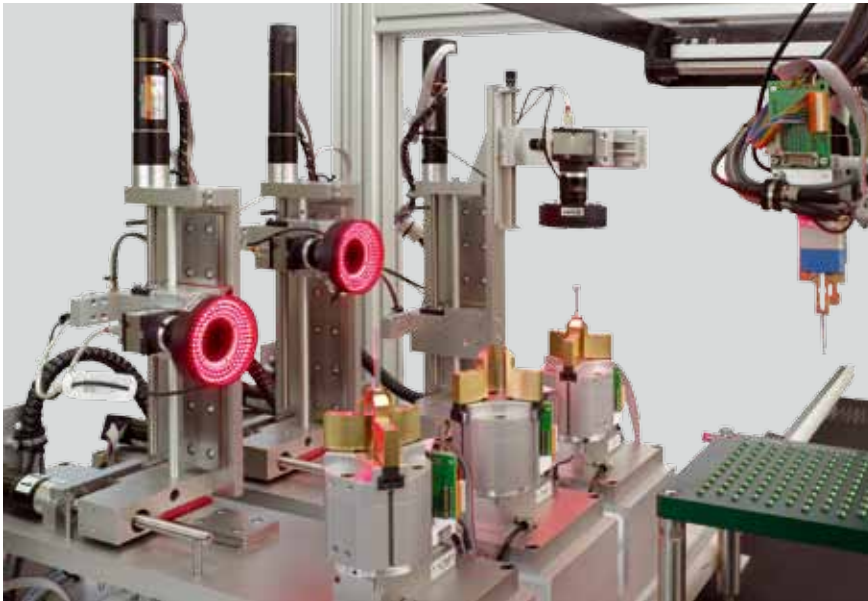
- └ GAMP/GMP Qualified
- └ Geometrical inspection



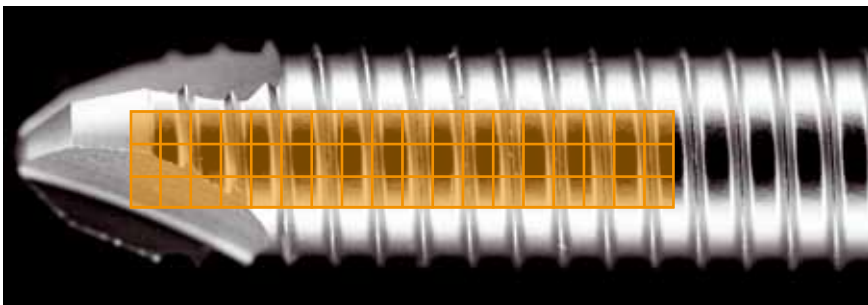
Stand-alone *testero vision* system



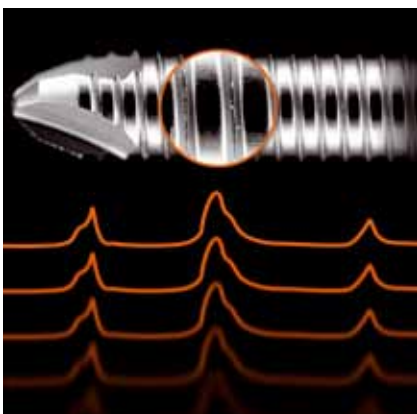
- └ An error catalog is not necessary
- └ Clear definitions between good and reject parts
- └ No restrictions on the surface structures that can be inspected



testero vision camera station with illumination control



Inspection scope definition



Testing and Evaluation



testero vision handling

Automatic Error Detection

The error types in the vision quality inspection systems may vary. Typically very small local rejects such as scratches, holes with gaps/splinters, incorrect threads, missing characteristics as well as large damaged areas. *ixmation testero vision* is able to detect all deviations from the specified condition.

Individually definable inspection scopes

The fully 100% automated testing of precision parts by the *ixmation testero vision* system is realized by a new self-learning image processing software. The part to be examined is presented to the system during a unique learning phase.

└ The system learns from good parts. Then, on the basis of complex computations, a master part is generated and prepared for the test process.

└ The testing scope can be individually evaluated. An adjustable sensitivity scale guarantees a reliable classification.

Error characteristics are recognized through the precision camera technology and the innovative image processing software, without these having been learned before by the system.

Europe
ixmation AG
info@ixmation.com
www.ixmation.com

North America
ixmation Inc.
info@ixmation.us
www.ixmation.us

Malaysia
ixmation (Asia) Sdn. Bhd.
info@ixmation.my
www.ixmation.my

China
ixmation (Suzhou) Co., Ltd.
info@ixmation.cn
www.ixmation.cn

ixmation (Tianjin) Co., Ltd.
tianjin@ixmation.cn
www.ixmation.cn

We can be contacted worldwide
through representatives or
dedicated branches. Contact us.